

REDMOND, OREGON

AL-345 (FAA)

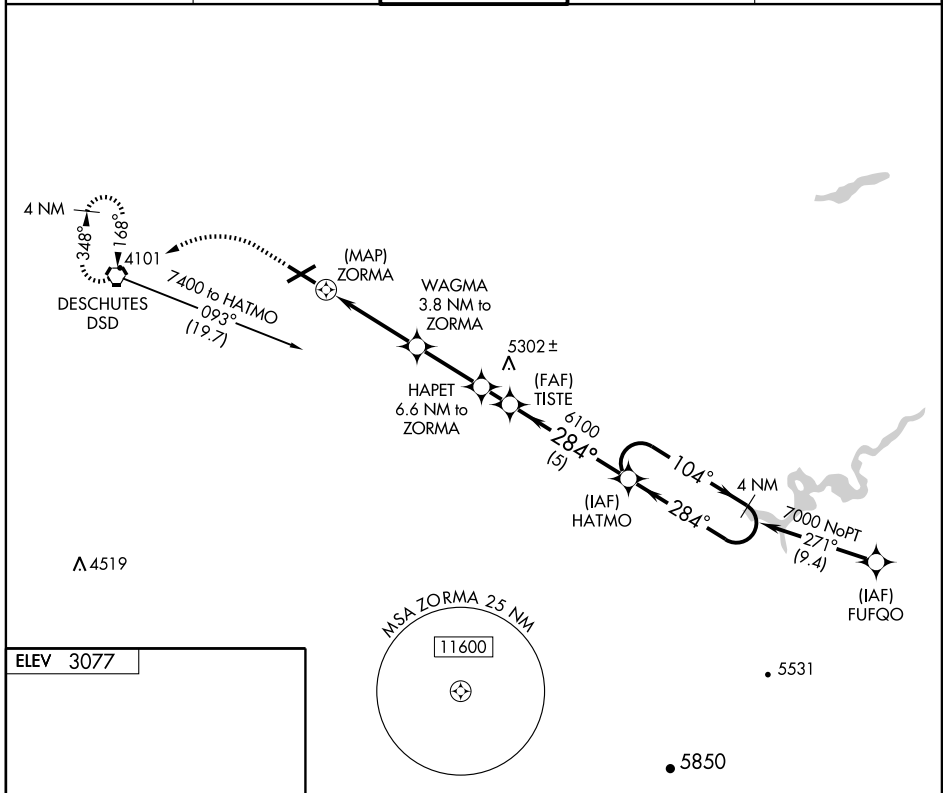
# RNAV (GPS) RWY 28

REDMOND/ROBERTS FIELD (RDM)

APP CRS <b>284°</b>	Rwy Idg TDZE Apt Elev	<b>7006</b> <b>3077</b> <b>3077</b>
------------------------	-----------------------------	---

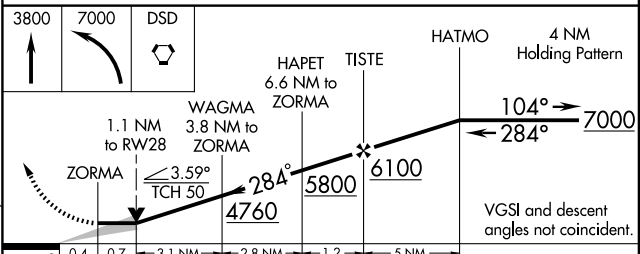
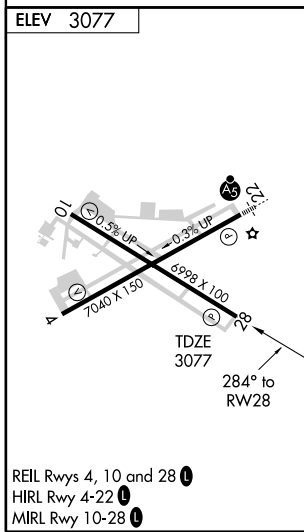
<p>GPS or RNP -0.3 required. DME/DME RNP -0.3 NA.</p> <p>NA</p>	<p>MISSED APPROACH: Climb to 3800 then climbing left turn to 7000 direct DSD VORTAC and hold.</p>
---	---

ASOS <b>119.025</b>	SEATTLE CENTER <b>128.15 257.75</b>	REDMOND TOWER* <b>124.5 (CTAF)</b>	GND CON <b>121.8</b>	UNICOM <b>122.95</b>
------------------------	--	---------------------------------------	-------------------------	-------------------------



NW-1, 11 MAY 2006 to 08 JUN 2006

NW-1, 11 MAY 2006 to 08 JUN 2006



CATEGORY	A	B	C	D
LNAV MDA	3560-1	483 (500-1)	3560-1¼ 483 (500-1¼)	NA
CIRCLING	3560-1	483 (500-1)	3560-1½ 483 (500-1½)	NA

REDMOND, OREGON  
Orig 06103

44°15'N-121°09'W

# RNAV (GPS) RWY 28